

## MI Power and Splice Box - JBMI-1086

MSCP's JBMI-1086 MI Power and Splice Boxes are suitable for connection of MI heating cables and come equipped with pre-drilled earthing plates and corner latches. The corner latches provide unobstructed access and the dual latching creates added security. They are approved for use in non-hazardous and hazardous locations. The materials used provide maximum protection for service in the harshest environments, including organic chemicals and corrosives in the oil, gas and petrochemical industries.

### Advantages:

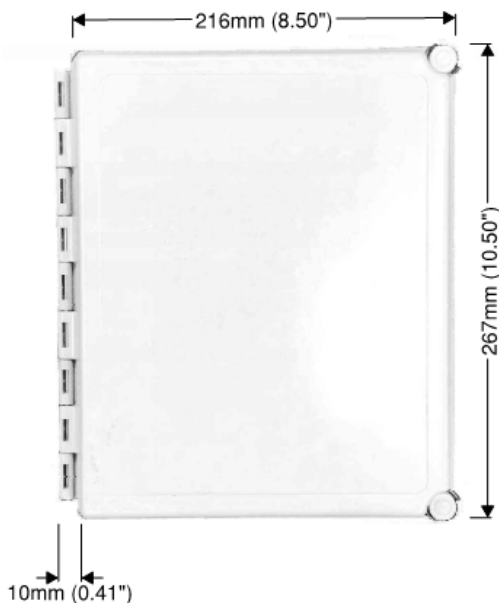
- Equipped with pre-drilled earthing plate
- Allows for eleven 1/2" and eight 3/4" hubs
- Mounting tabs and stainless steel screws are provided with the enclosure
- Water-tight and dust-tight seal
- Moisture proof
- Highly resistant to chemicals and corrosive environments
- Approved for use in hazardous locations
- Covers a wide range of ambient temperatures from – 50°C (-58°F) to 40°C (104°F)

### Applications:

- Typically used as marshalling boxes, splice boxes and end boxes for 3-phase systems
- One incoming power cable and up to 7 outgoing MI heating cables
- One incoming power cable and 5 outgoing power cables when used as a marshalling box
- Can be used with B, D and E style MI heating cables
- Can be used for 3-phase applications such as power, splice and/or end box
- Pipes, vessels and tanks
- Chemical and petrochemical industries
- Oil and gas industries



## JBMI-1086



## Electrical Information

### Specifications

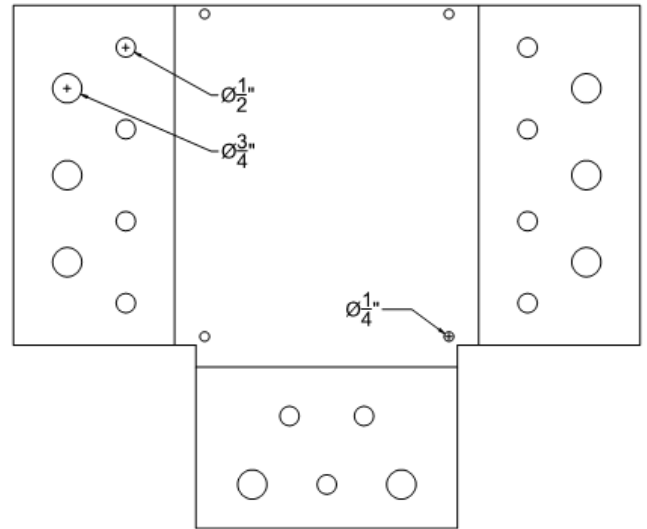
- Maximum operating voltage—600Vac
- Maximum 35A per terminal
- Terminals rated for 18AWG to 6AWG
- Maximum circuit breaker rating—40A
- Eight terminal blocks and three grounding terminal block
- Power cable glands and hubs for MI cold leads are not included

# JBMI-1086

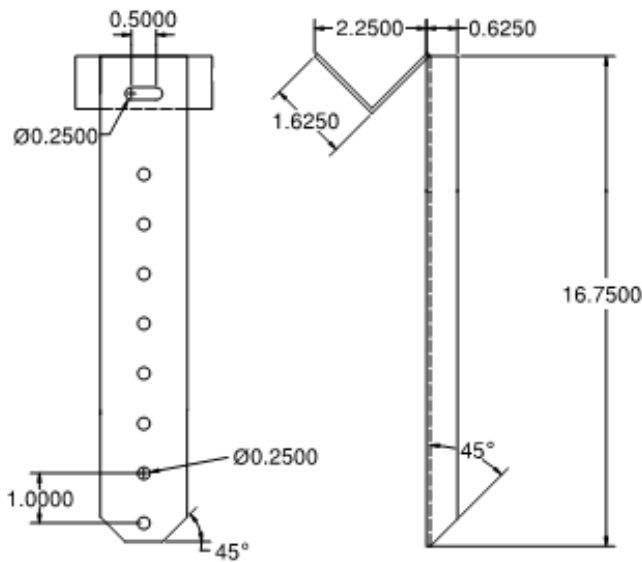
## Enclosure Details

### Mounting Options

- Use the pre-fabricated holes and screws provided
- Use the four mounting tabs and screws provided
- Can be mounted either on top or on bottom of the pipe
- Use two mounting brackets (MB-300/400) and pipe straps (SSPS-01/02/10/20) to secure junction boxes on pipes
- Mounting brackets and pipe straps are not included but can be purchased separately
- Mounting brackets are to be installed prior to the insulation and cladding



**Earthing Plate**



**Mounting Bracket**